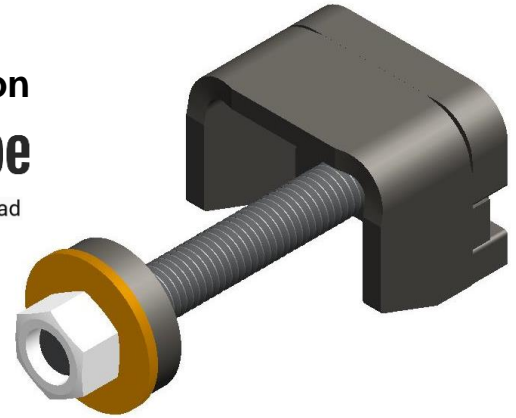


Parts List:

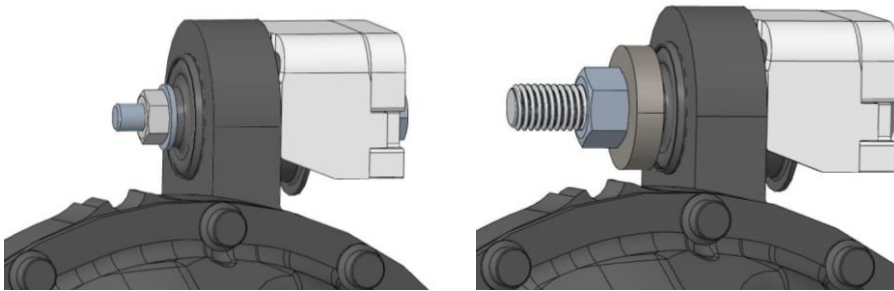
- ☐ Instructions
- ☐ UCA flex end installation tool 81004 (1)
- ☐ **#106 – UCA Flex End Installation Tool Hardware (1)**
 - ☐ 5/8-11 x 5" carriage bolt (1)
 - ☐ 5/8" SAE hardened washer (1)
 - ☐ 5/8-11 hex nut (1)
 - ☐ Thick washer 81005 (1)
 - ☐ M10 x 90 hex bolt, cl 10.9 (1)
 - ☐ 7/16 F436 hardened washer (2)

Install video on



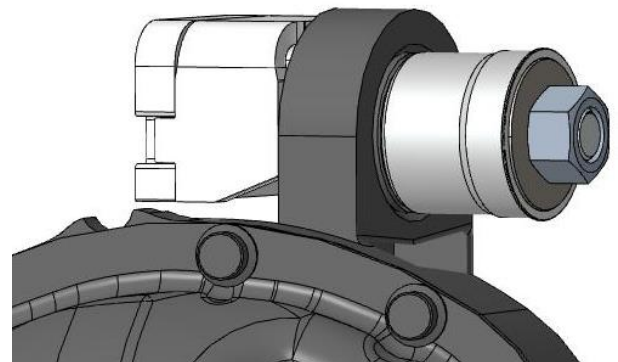
Removal of OEM rubber bushing:

1. Assemble the tool as shown using the M10 x 90 hex bolt and 7/16 washers.
2. Tighten the nut until the center sleeve of the bushing comes out of the rubber.
Ripping or tearing of the rubber bushing is expected
3. With the center sleeve removed, reassemble the tool in the bushing using the 5/8" carriage bolt and thick washer.
4. Tighten the nut until the rubber bushing comes free of the axle housing.



Installation of UCA flex end tube:

5. Assemble the tool as shown using the 5/8" carriage bolt.
6. Position the tool opposite the side of the UCA flex end tube in the cast axle mount.
7. Slide on thick washer and 5/8" SAE washer and snug up with the 5/8" hex nut.
(Add a little bit of oil or grease to the threads to reduce wear.)
8. Tighten nut until UCA flex end tube bottoms out in cast axle mount.
9. Using a hammer and punch (3/8" diameter punch works well), bend the thin edge on the flex end tube outward to lock it in place.
(Use roughly 3/8" wide bends in two places.)



Removal of UCA flex end tube:

10. Disassemble the flex end.
11. Assemble the tool as shown using the 5/8" carriage bolt.
12. Position the tool on the driver's side of the cast axle mount.
(Thick walled side of the flex end tube.)
13. Slide on thick washer and 5/8" SAE washer and snug up the 5/8" hex nut.
(Add a little bit of oil or grease to the threads to reduce wear.)
14. Tighten nut until UCA flex end tube pops out of the cast axle mount.

