

IRON ROCK OFF ROAD

JK Front Coil Spring Retainers

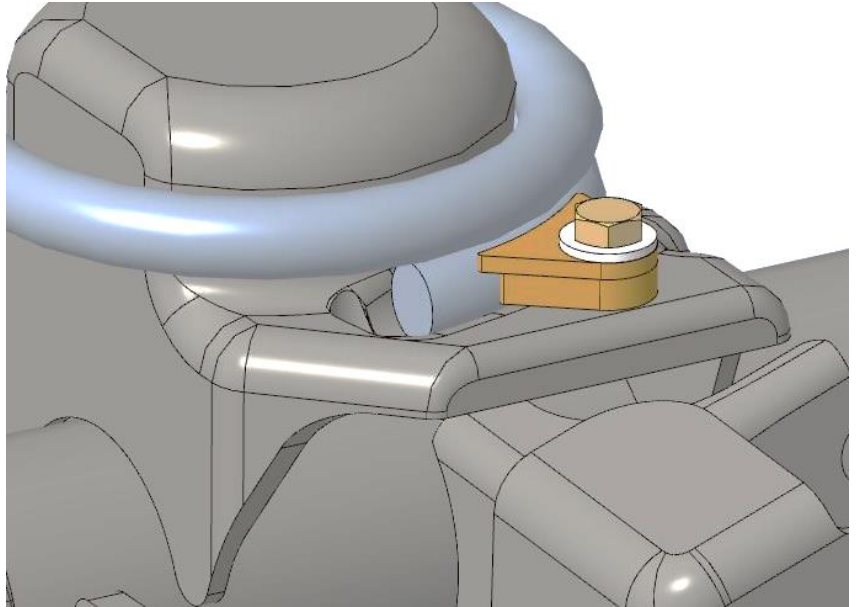
1-877-919-JEEP www.ironrockoffroad.com

Parts Checklist:

- Instructions
- Iron Rock Off Road Logo Decal 10001 (1)
- Ironrockoffroad.com decal (1)
- #21 - JK Front Coil Retainer Hardware (1)**
 - Top plate, thin, no notch 80162 (2)
 - 1/4" thick spacer, one notch 80163 (2)
 - Thin spacer, two notches 80164 (2)
 - 1/4" USS washer (2)
 - 5/16 x 1" Hex head bolt, gr8 (2)
 - 5/16-18 Serrated flange nut (2)

Before you begin:

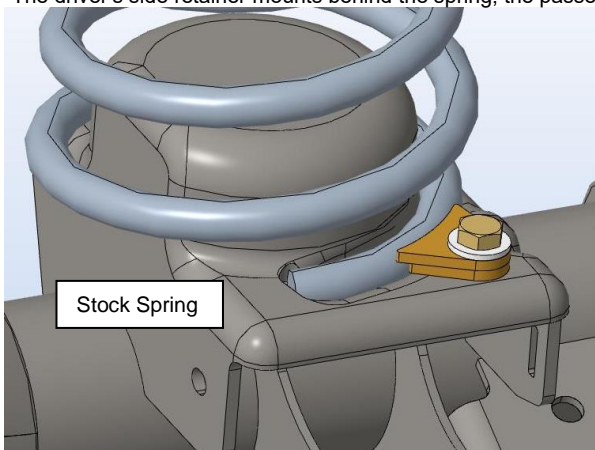
- ***Ensure that all parts are present and in good condition using above shipping checklist. ***
- Read and understand all installation instructions.
- Tools required:
 - Floor jack and jack stands
 - Basic hand tools
 - Permanent marker
 - Drill
 - Drill bit set (11/32" bit)



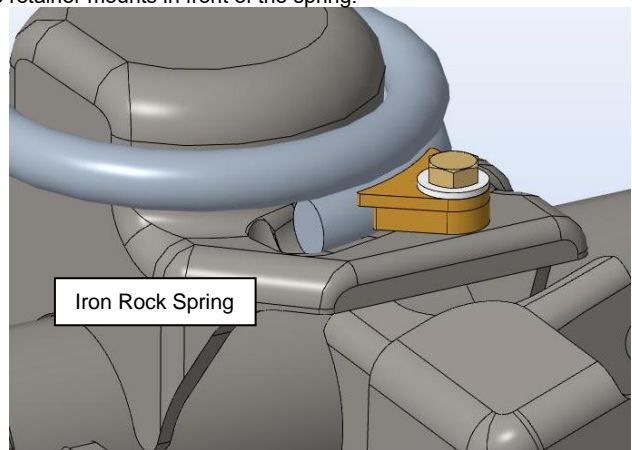
Contact **Iron Rock Off Road** with any questions before, during, or after installation. 1-877-919-JEEP or 1-952-210-7185

Installation:

1. Lift front of vehicle and support with jack stands under axle.
2. Disconnect sway bar at the axle and rotate it up out of the way.
3. Disconnect driver's side shock at the axle.
It is not necessary to remove the front wheels. It is helpful to steer the front tires left or right to give extra room to work.
4. **Iron Rock lift springs**, place the 1/4" thick spacer (one notch) against the spring on the lower spring mount near the end of the coil spring.
5. **Stock springs**, place the thin spacer (two notches) against the spring on the lower on the spring mount near the end of the coil spring.
The driver's side retainer mounts behind the spring, the passenger's side retainer mounts in front of the spring.



Stock Spring



Iron Rock Spring

6. Using the spacer as a guide, mark the location of the bolt hole with a permanent marker.
7. Remove the spacer and drill an 11/32" hole.
8. Install the spacer and top plate with the provided 5/16 x 1" bolt, washer and nut.
The top plate *should not* sit flat on the spacer.
9. Repeat steps 4-8 for the opposite side spring mount.
The driver's side retainer mounts behind the spring, the passenger's side retainer mounts in front of the spring.
10. Lift front of vehicle and place jack stands under the frame rails allowing the front axle to drop away from the frame.
11. Check that the spring cannot turn or lift off the lower spring mount.
12. Reattach the sway bar and driver's side shock.
13. Lower the vehicle to the ground.

Final Safety Warning:

* Re-torque all fasteners after 100 miles, and frequently inspect all safety critical suspension components. It is the responsibility of the installer to be sure all fasteners are properly tightened after installation and to ensure the owner knows his/her ongoing responsibility. It is the responsibility of the owner of the vehicle to be sure all safety critical components are inspected frequently, especially after off road or other demanding use.