

IRON ROCK OFF ROAD

JK Front Track Bar Bracket Instructions

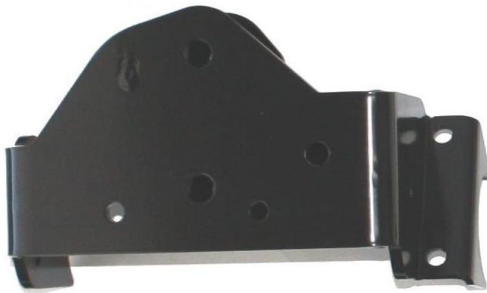
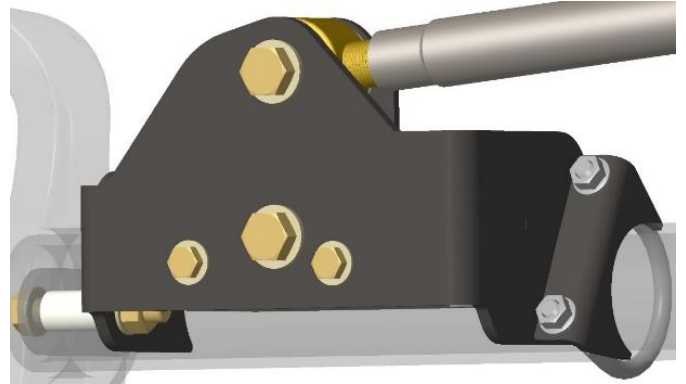
1-877-919-JEEP www.ironrockoffroad.com

Parts List:

- ☐ Instructions
- ☐ Iron Rock Off Road logo decal 10001 (1)
- ☐ Track Bar Relocation Bracket 80030 (1)
- ☐ Sway Bar Link Relocation Bracket 80047 (1)
- ☐ 2.5" U-Bolt 80045 (2)

#189 - JK Track Bar and Sway Bar Link Relocation Hardware (1)

- ☐ 3/8" serrated flange nut (6)
- ☐ M12 Sway Bar Spacer 92038 (2)
- ☐ M14 track bar spacer 80040 (1)
- ☐ M12 x 70mm hex bolt (2)
- ☐ M12 nylock nut (2)
- ☐ 7/16 USS washer (2)
- ☐ 3/8 x 1" hex bolt (2)
- ☐ 3/8 SAE washer (2)
- ☐ M14 x 80mm hex bolt (2)
- ☐ M14 nylock flange nut (2)
- ☐ 9/16" F436 washer (2)



Installation Instructions:

Safety Warning: *Important! Read before installation. *****

We recommend this system be installed by a qualified professional. Knowledge of steering/suspension component function is necessary for safe installation and post installation inspections. Be sure to re-torque all steering/suspension components after the first 100 miles of use, and frequently inspect all safety critical steering components.

Before you begin:

- ☐ Read all safety warnings.
- ☐ Read and understand installation instructions.
- ☐ Contact Iron Rock Off Road with any questions before, during, or after installation.
- ☐ **Ensure that all parts are present and in good condition using the included shipping checklist.**
- ☐ Be sure you have the following tools and supplies:
 - ☐ Floor jack and jack stands.
 - ☐ Basic hand tools (wrenches, sockets, etc.).
 - ☐ Torque wrench (ft-lb and in-lb)

Notes:

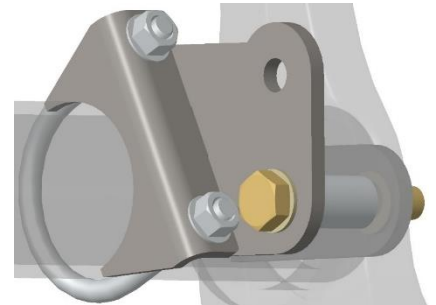
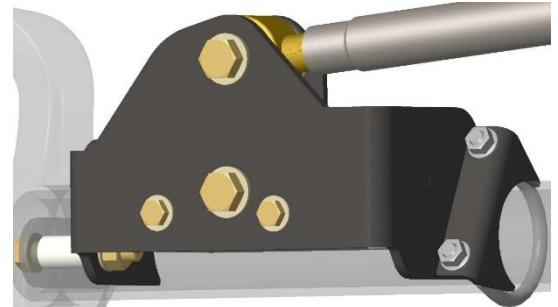
- ☐ IRO recommends a "Flipped Drag Link" in addition to the front track bar relocation to maintain proper steering geometry. (Sold separately)
- ☐ This kit requires a minimum front bump stop extension of 3"

Removal of existing parts:

1. Raise the front end of the vehicle and secure on jack stands under the frame.
2. Remove front tires.
3. Disconnect the sway bar links from the axle.
4. Disconnect track bar from the axle and position it out of the way.

Track Bar and Sway Bar Link Relocation Bracket Installation:

5. Position the Track Bar Relocation Bracket over the factory track bar bracket on the axle. Attach it loosely with the provided larger diameter M14 spacer in place of the factory track bar using the M14 x 80mm bolt and nut from hardware kit #189.
6. Install the 3/8 x 1" bolts, 3/8 SAE washers and 3/8" serrated flange nuts through the front side of the bracket. Do not tighten at this time.
****NOTE**** It is common that the 3/8" holes in the OEM track bar bracket are not round from the factory. It may be necessary to drill them slightly to ensure easy fitment of hardware.
7. Install the 1-3/8" M12 spacer between the Track Bar Relocation Bracket and the sway bar mount on the axle. Use the M12 x 70mm bolt, nylock nut and washer from hardware kit #189. Do not tighten at this time.
8. Install the 2.5" U-Bolt onto the end of the Track Bar Relocation Bracket using the 3/8" serrated flange nuts from hardware kit #189.
9. Tighten the M14 lower track bar bolt to 120 ft-lb, the 3/8" bolts to 35 ft-lb, the U-bolt to 40 ft-lb, and the M12 sway bar bolt to 75 ft-lb.
10. Reinstall the track bar in the upper track bar mounting hole in the bracket. Do not tighten at this time. The track bar will be tightened with the Jeep on the ground at ride height.
11. Position the Sway Bar Link Relocation Bracket on the axle next to the sway bar link tab. Attach it loosely with the provided 1-3/8" M12 spacer, M12 x 70mm bolt, nylock nut and washers from hardware kit #189.
12. Install the 2.5" U-Bolt onto the Sway Bar Link Relocation Bracket using the 3/8" serrated flange nuts from hardware kit #189.
13. Tighten the U-Bolt to 40 ft-lb and the M12 sway bar bolt to 75 ft-lb.



Final Torque and Adjustments:

14. Reinstall sway bar links with original hardware onto the holes provided on the new brackets.
15. Reinstall wheels/tires and torque lug nuts to 85-115 ft-lb.
16. With the Jeep on the ground at ride height, tighten the track bar to 120 ft-lb.

*Be sure to verify that the front axle is centered left to right, adjust track bar accordingly.

Final Safety Warning:

* Re-torque all fasteners after 100 miles, and frequently inspect all safety critical steering/suspension components. It is the responsibility of the installer to ensure all fasteners are properly tightened after installation and to ensure the owner knows his/her ongoing responsibility. It is the responsibility of the owner of the vehicle to be sure all safety critical components are inspected frequently, especially after off road or other demanding use.

