

IRON ROCK OFF ROAD

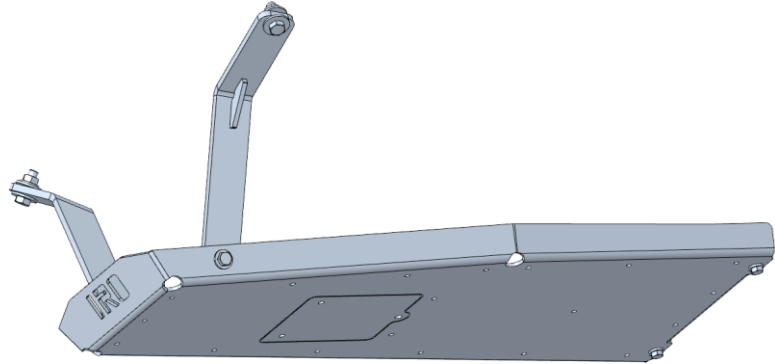
1-877-919-JEEP www.ironrockoffroad.com

**JK Rock-Link
Engine/Trans Skid**

See our website product listing for full color instructions

Parts Checklist:

- Iron Rock Off Road Logo Decal 10001 (1)
- Ironrockoffroad.com decal (1)
- Skid Plate 80123 (1)
- Skid Plate Access Panel 80126 (1)
- Support Arm, Driver 80129 (1)
- Support Arm, Passenger 80132 (1)
- #248 – Engine Skid Hardware (1)**
 - 3/8"-16 x 3/4" Button head bolt, S/S (2)
 - 3/8"-16 x 1" Serrated flange bolt (2)
 - 3/8" USS washer (4)
 - M10-1.5 x 40 hex bolt class 10.9 (2)
 - M10-1.5 nylock flange nut (2)
 - 1/2"-13 x 1-1/2" hex bolt, gr8 (2)
 - 1/2" USS washer (4)
 - 1/2"-13 nylock nuts (2)
 - 5/16"-18 x 1" Taptite flange bolt (1)
 - 5/16"-18 x 3/4" Button head bolt (1)



Safety Warning: ***Important! Read before installation. ***

We recommend this system be installed by a qualified professional. Knowledge of component function is necessary for safe installation and post installation inspections. Be sure to re-torque all components after the first 100 miles of use, and frequently inspect all safety critical components.

Before you begin:

- ***Ensure that all parts are present and in good condition using above shipping checklist. ***
- Read and understand all installation instructions.
- Tools required:
 - Floor jack and jack stands
 - Basic hand tools
 - Torque wrench

5/16 Bolts
Thread-Forming & Button Head



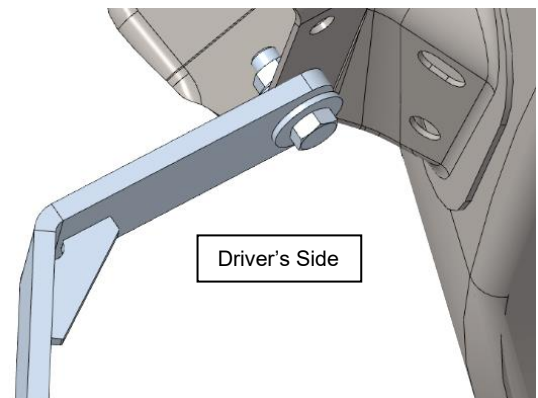
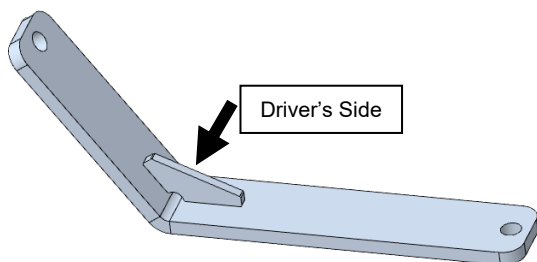
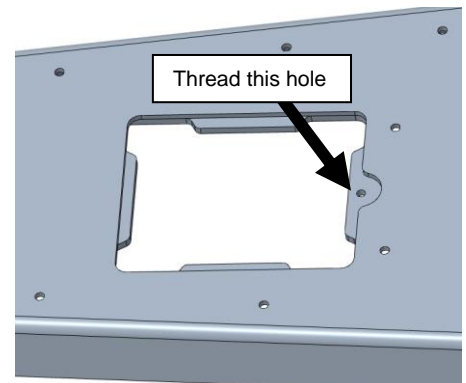
Note: The JK Rock-Link Front Long Arm System is required prior to installation of this engine skid plate system.

Prepare the parts for installation:

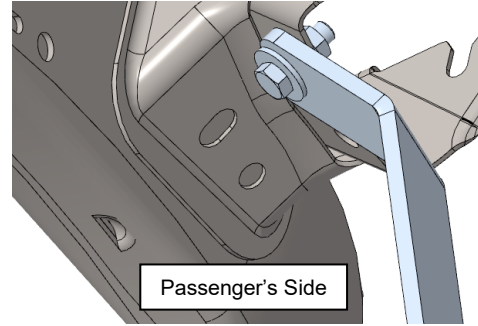
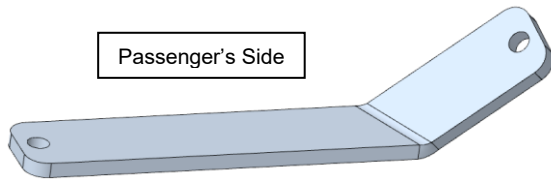
1. Using the provided 5/16 thread forming hex bolt, thread the bolt hole for the skid plate access panel. *An extra 5/16 button head bolt is provided if you prefer a lower-profile fastener.

Installation:

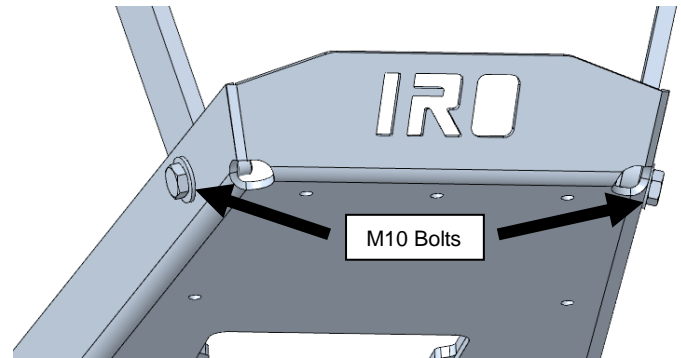
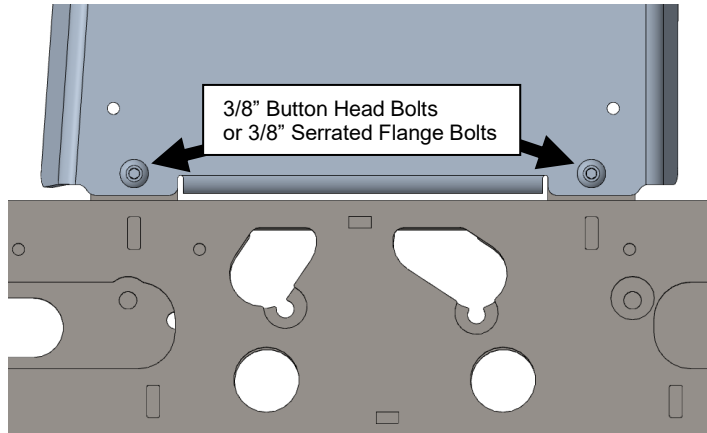
2. Lift front of vehicle and support with jack stands under frame rails.
3. Allow the front axle to droop away from the chassis as much as possible to make install easier.
4. Locate the skid plate support arms and **HK #248**.
5. Install the driver side support arm into the rear-most hole on the engine mount bracket on the frame. Use a 1/2" bolt, washer and nut. Do not tighten the hardware at this time.



6. Install the passenger's side support arm into the forward-most hole on the engine mount bracket on the frame. Use a 1/2" bolt, washer and nut. Do not tighten the hardware at this time.



7. Install the engine skid plate using 3/8" bolts at the crossmember and M10 bolts, washers, and nylock nuts at the support arms.
8. With all the bolts installed, tighten the 1/2" bolts at the frame to 60 lb-ft., tighten the M10 bolts to 60lb-ft., tighten the 3/8" bolts to 30 lb-ft.



9. Install the access panel in the skid plate by inserting the tabs up, into the opening then hinging the panel up to the skid plate.
10. Secure the access panel with a 5/16 x 3/4" serrated flange bolt.

