

# IRON ROCK OFF ROAD

JK Raised Steering  
Stabilizer Instructions

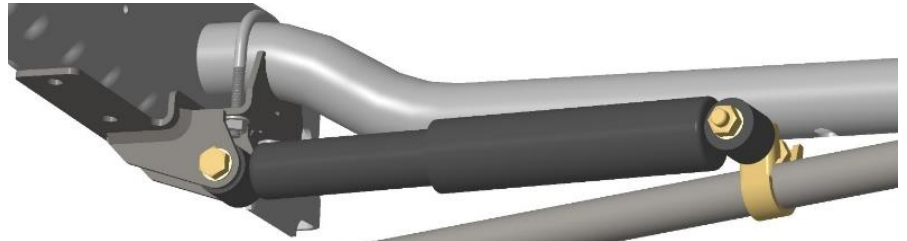
1-877-919-JEEP www.ironrockoffroad.com

## Parts List:

- Instructions
- Iron Rock Off Road logo decal 10001 (1)
- Steering Stabilizer Relocation Bracket 80035 (1)
- Sway Bar Spacer Plate 80046 (1)
- 2" U-Bolt for stabilizer bracket 80044 (1)
- Stabilizer Upgrade (Optional)**
  - Heavy Duty Steering Stabilizer 2970 (1)

## #190 - JK Steering Stabilizer Relocation Hardware (1)

- 3/8" serrated flange nut (2)
- M12 x 60mm hex bolt, cl 10.9 (1)
- M12 x 100mm hex bolt, cl 10.9 (1)
- M12 nylock hex nut (2)
- 7/16 F436 washer (4)
- Steering Clamp 95018 (1)
- 6" Cable Tie (1)



## Installation Instructions:

**Safety Warning: \*\*\*Important! Read before installation. \*\*\***

We recommend this system be installed by a qualified professional. Knowledge of steering component function is necessary for safe installation and post installation inspections. Be sure to re-torque all steering components after the first 100 miles of use, and frequently inspect all safety critical steering components.

### Before you begin:

- Read all safety warnings.
- Read and understand installation instructions.
- Contact Iron Rock Off Road with any questions before, during, or after installation.
- Ensure that all parts are present and in good condition using the included shipping checklist.**
- Be sure you have the following tools and supplies:
  - Floor jack and jack stands.
  - Basic hand tools (wrenches, sockets, etc.).
  - Torque wrench (ft-lb)

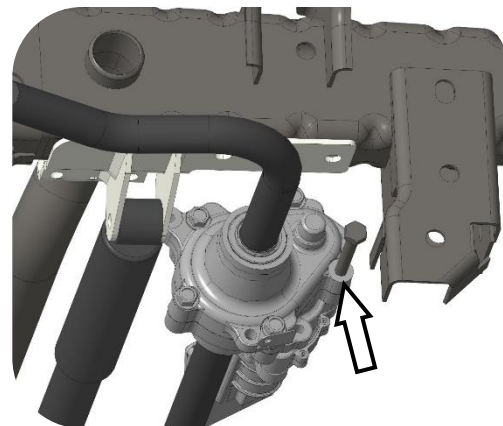
### Steering Stabilizer Relocation Bracket Installation:

1. Raise the front end of the vehicle and secure on jack stands under the frame.
2. Remove factory stabilizer.
3. Remove the stabilizer clamp from the tie rod.
4. Remove the two bolts securing the sway bar to the frame above the track bar bracket.
5. Loosen the two bolts securing the sway bar on the opposite side of the frame. Do not fully remove them at this time.
6. Cut and discard the zip tie holding the electrical harness to the round tubular crossmember on the frame. See picture.



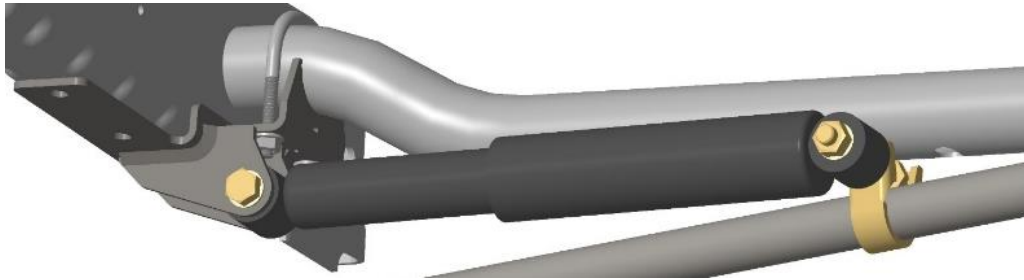
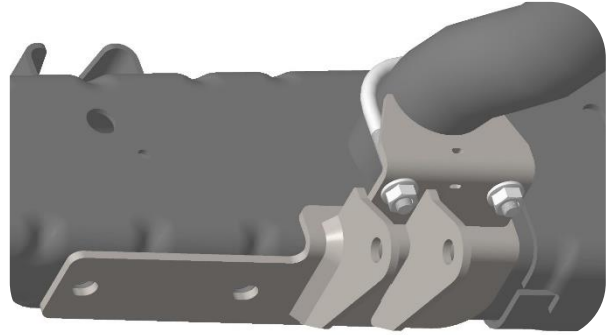
### Rubicon Only:

7. Remove the bolt from the bottom rear of the sway bar disconnect motor. See picture.
8. Remove the sway bar disconnect motor mounting bolt from the rubber hanger.
9. Disconnect the electrical connector from the sway bar disconnect motor.
10. Rotate the disconnect motor forward and install bolt through the rubber hanger into the empty bolt hole on the disconnect motor.
11. Reconnect electrical connector.



## **Bracket Install Continued:**

12. Install the Steering Stabilizer Relocation Bracket onto the frame. Ensure the electrical harness is positioned outside the bracket. Ensure the U-Shaped portion aligns with the round tubular crossmember on the frame.  
**\*\*TIP:** Slide a zip tie through the zip tie slots on the U-Shaped bracket before installing the bracket to the frame. Do not tighten at this time.
13. Reinstall the original sway bar mounting bolts through the Steering Stabilizer Relocation Bracket. Do not tighten at this time.
14. Install the 2" U-Bolt over the round tubular crossmember with 3/8" flange nuts from hardware kit #190.  
**\*\*\*CAUTION\*\*\*** A brake line is located on top of the round tubular crossmember. Ensure the brake line is **not** clamped under the U-Bolt.
15. With the bracket loosely assembled remove the other sway bar mounting bolts from the opposite side of the frame.
16. Install the Sway Bar Spacer Plate between the sway bar mount and the frame using the original sway bar mounting bolts.
17. Tighten the sway bar mounting bolts to 45 ft-lb and the U-Bolt to 40 ft-lb.
18. Secure the electrical harness to the Steering Stabilizer Relocation Bracket with a zip tie. Zip tie holes are provided on the bracket.



## **Steering stabilizer adjustment:**

19. With the steering wheel centered and the Jeep at ride height, turn the steering wheel to the right until full lock is reached. This should be the point where the steering stabilizer would be fully collapsed: its shortest length.
20. Install your steering stabilizer into the Steering Stabilizer Relocation Bracket on the frame using the M12 x 60mm bolt, nut and washers.
21. Install a steering clamp onto the drag link by bending open the clamp slightly to fit over the drag link.  
\*Two adjustable wrenches work well for this task.
22. Attach the other end of the stabilizer to the clamp on the drag link using the M12 x 100mm bolt, nut and washers from hardware kit #190. The clamp should point up, the stabilizer should mount to the front side of the clamp.
23. Ensure the stabilizer is fully collapsed by compressing it by hand.
24. Note the location of the stabilizer clamp on the drag link.
25. Extend the stabilizer slightly (approx. 1/8") on the drag link and tighten the clamp. The clamp should point up, the stabilizer should mount to the front side of the clamp.
26. Torque the stabilizer clamp to 55 ft-lb and 65 ft-lb at the bracket.
27. The stabilizer should now be centered with the tires pointed straight ahead. Double check by cycling the steering both directions to ensure the steering stabilizer does not limit your steering angle to the left or right.

## **Final Safety Warning:**

\* Re-torque all fasteners after 100 miles, and frequently inspect all safety critical steering components. It is the responsibility of the installer to ensure all fasteners are properly tightened after installation and to ensure the owner knows his/her ongoing responsibility. It is the responsibility of the owner of the vehicle to be sure all safety critical components are inspected frequently, especially after off road or other demanding use.

