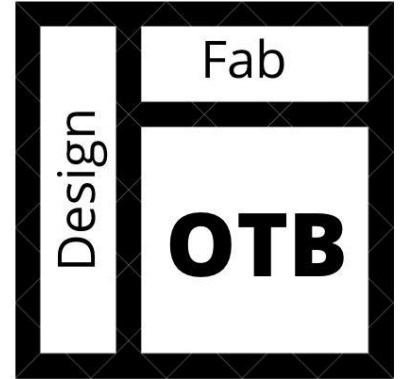


JL Hood Vents Install Instructions



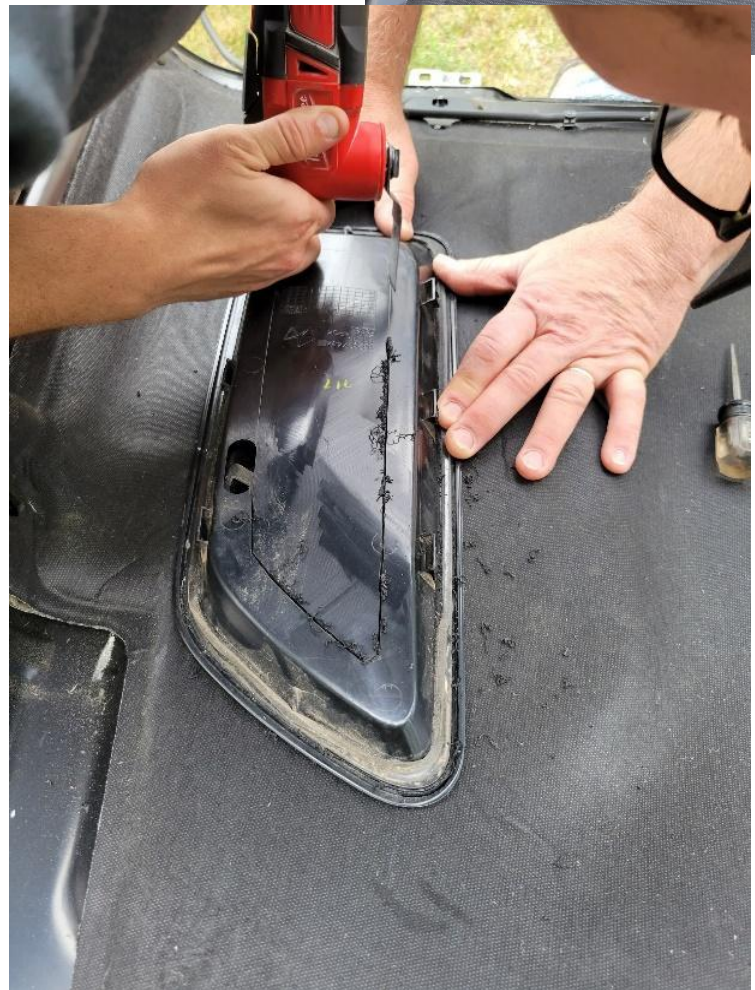
- Gently remove 3 of the plastic rivets along the side of the hood



- Remove the plastic vent by pressing on the 6 clips on the inside of the hood
- Align the bezzel on the backside of the vent and use the inside edge to trace a line onto the vent.



- Cut out the traced line and remove the plastic from the center. **Careful to only cut through one layer of plastic. If the cut is too deep, it will show on the top side of the vent.**



- Clean up the edges of the vent from the cutting.

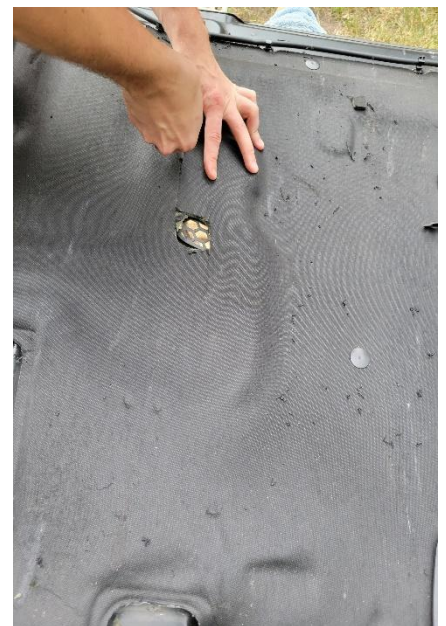
- From the outside of the hood cut a slit in the liner to mark the location of the hole



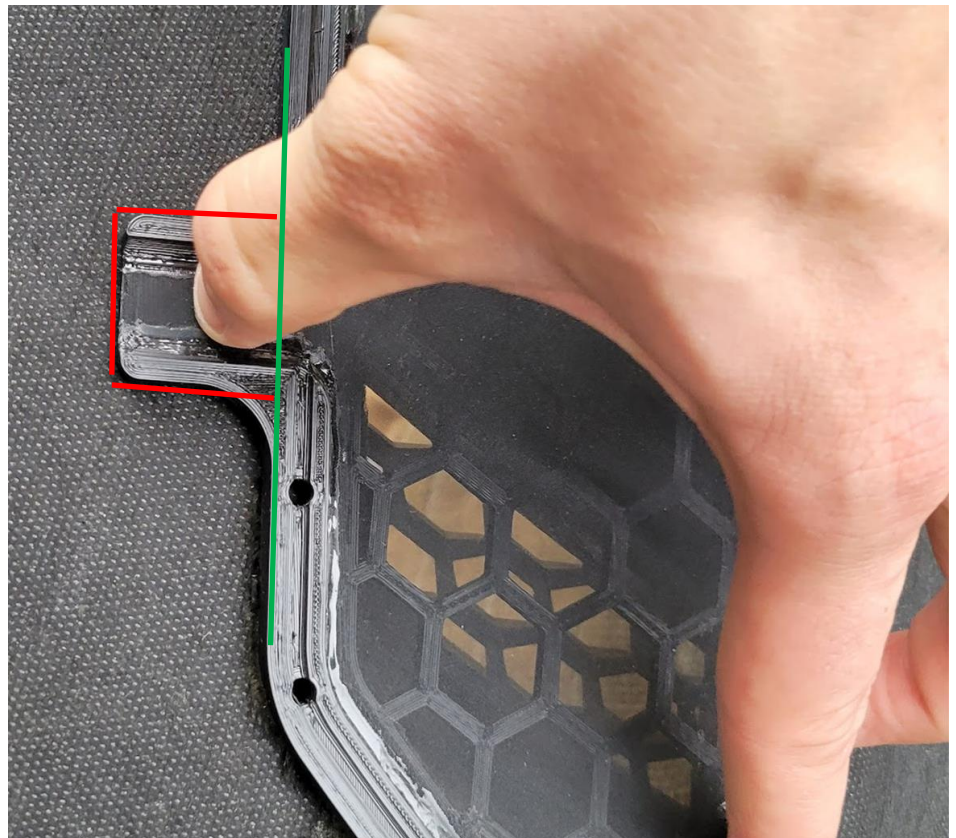
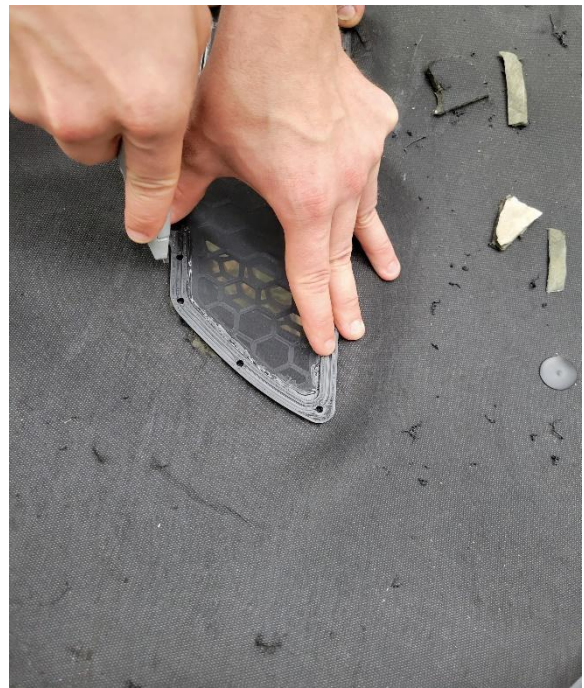
- Re-install the vent into the hood by pressing it into its original location until all 6 clips are latched.



- Starting at the mark made previously work your way out until the hole in the liner matches the hole cut in the vent.



- Line up the honeycomb part to the large hole now in the liner and cut out the outside contour of the part. Increasing the size of the hole in the liner. **Do not cut out the channel on the side of the honeycomb part. Cut along the green line in the picture below.**

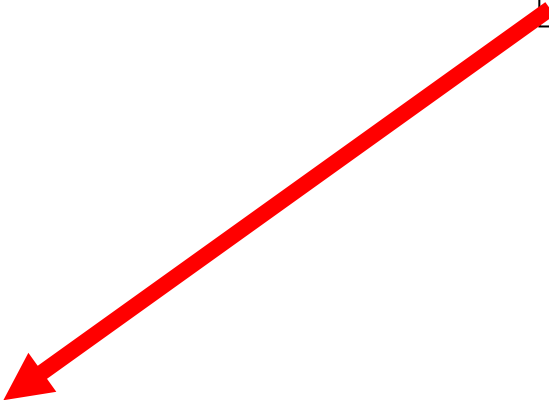




- Apply a bead of silicone to the channel on the honeycomb part. **Apply only to the areas marked in green in the photo below.**
- Lift the hood liner slightly and slide the honeycomb part into the hole.

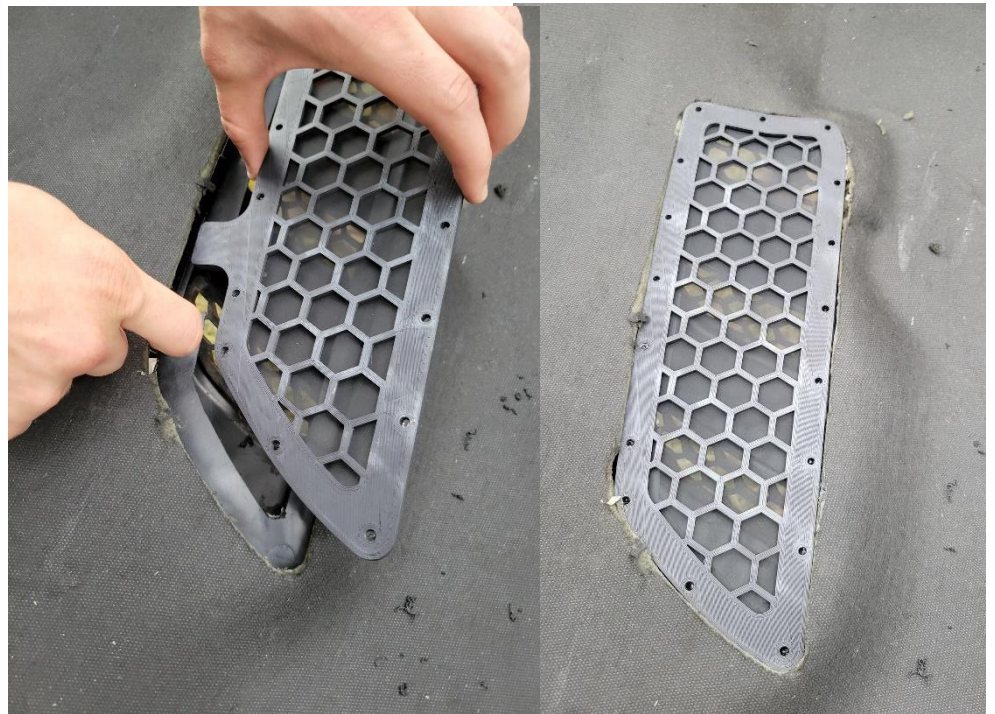
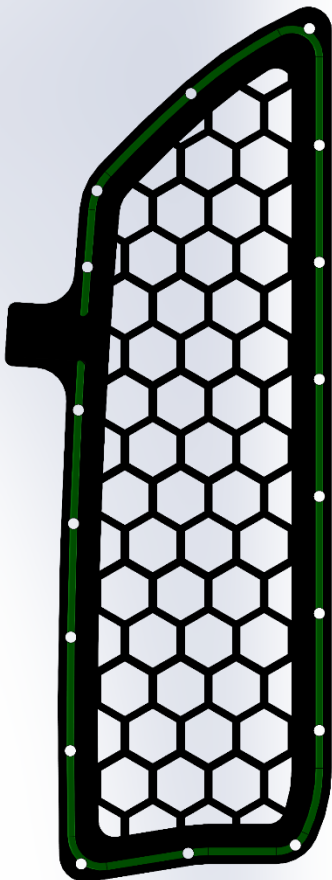


Do not apply silicone to the water channel





e onto the hood so it lines up with the



- Start in the center of the part and work your way out gently tightening the screws with a washer as you go with a screwdriver



- Repeat the steps on for the other hood vent

Thank you for purchasing from OTB fab! If you have any additional questions E-mail us at OTBDesignFab@gmail.com