

IRON ROCK OFF ROAD

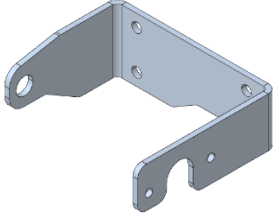
TJ T-Case Linkage Relocation

1-877-919-JEEP www.ironrockoffroad.com

Parts Checklist:

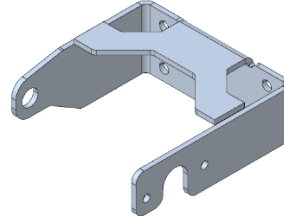
97-02

- T-case linkage U-bracket 88135 (1)



03-06

- T-case linkage U-bracket 88137 (1)



- T-case linkage relocation plate 88134 (1)

#119 - Transfer Case Linkage Relocation Bracket (1)

- 1/4-20 x 3/4 splined carriage bolt (3)
- 1/4 USS washer (3)
- 1/4-20 hex nut (3)
- 1/4-20 x 3/4 thread cutting screw (2)
- Linkage bushing 53004810 (1)

Before you begin:

- Read all safety warnings.
- Read and understand installation instructions.
- Check all shift components for wear and replace as needed.
- Contact Iron Rock Off Road with any questions before, during, or after installation.
- Ensure that all parts are present and in good condition using the included shipping checklist.

Be sure you have the following tools and supplies:

- Floor jack
- Basic hand tools
- Angle grinder with cut off wheels or Sawzall

Installation:

1. Locate transfer case linkage u-bracket, mounting plate, and hardware kit 119 (figure 1).
2. Install splined carriage bolts into flat plate from the backside into the lower set of holes. Use a press, bench vice, or hammer to press them in.
3. Disconnect both transfer case linkage rods from the pivot arm. Use a pry bar to pop the linkage out of its bushings. Disconnect all linkage from the pivot arm and remove pivot arm from its mounting brackets.
4. Install the pivot arm into the provided u-shaped bracket using the new bushing and thread cutting screws. Tighten screws.
5. Remove the 2 nuts that hold the linkage bracket to the transfer case and remove bracket. Install the new flat plate in its place (fig 2). Tighten nuts.
6. Remove factory linkage bracket from body tub. Cut above the lower bolts (using a Sawzall or abrasive wheel) and the bracket will slide out without removing the bolts. Leave the rubber mounts in place.
7. Bolt the u-bracket to the flat plate using a washer under each nut. Tighten nuts.
8. Connect all linkage rods at this time. Adjust primary linkage rod so that transfer case will reach all positions without binding. Be sure there is a little bit of extra travel, or wiggle room, beyond the front and rearmost positions (2 high and 4 low).

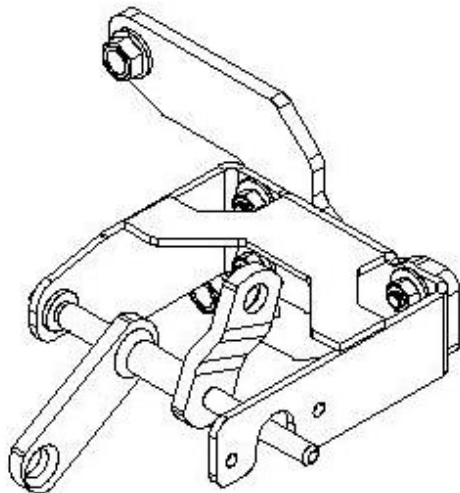


Figure 1

Transfer Case



Figure 2

Transfer Case Linkage Installed